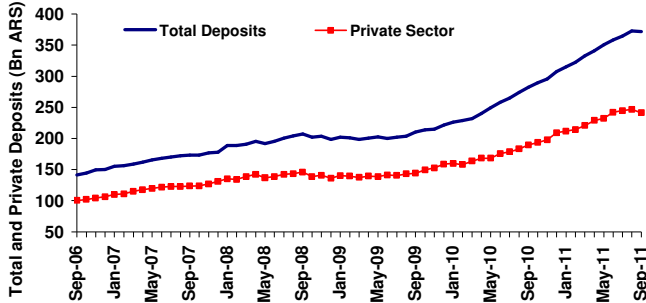
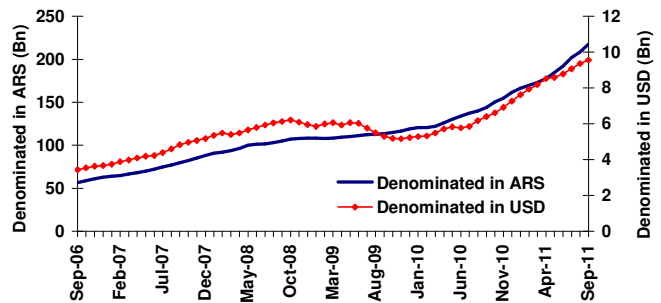


BANK DEPOSITS AND LOANS

Month	Bank Deposits							
	Total			Private			YTD	
	Bn ARS	m/m	y/y	Bn ARS	m/m	y/y	Total	Private
Sep-11 ^(*)	371.6	-0.3%	31.8%	241.1	-2.3%	27.3%	20.9%	15.3%

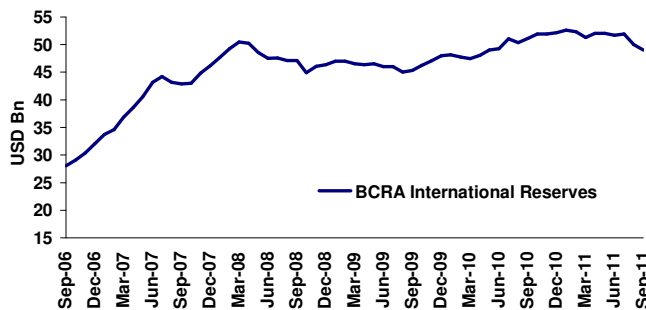


Month	Bank Loans to the Private Sector (monthly average)							
	Denominated in ARS			Denominated in USD			YTD	
	Bn ARS	m/m	y/y	Bn USD	m/m	y/y	In ARS	In USD
Sep-11 ^(*)	217.6	4.4%	51.3%	9.5	2.0%	49.0%	34.6%	31.4%

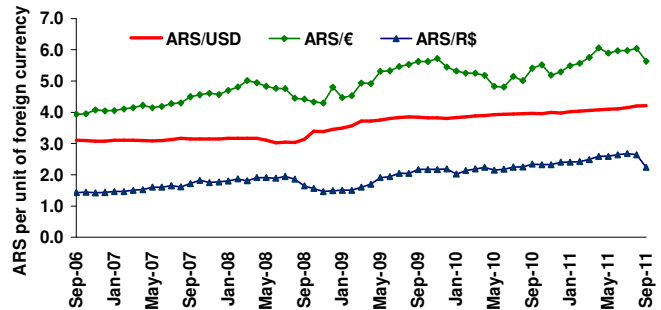


INTERNATIONAL RESERVES AND EXCHANGE RATES

Month	BCRA International Reserves (Bn USD)					
	Value	m/m	y/y	YTD	2010 (eop)	2009 (eop)
Sep-11 ^(*)	49.1	-1.9%	-4.0%	2.3%	52.2	48.0



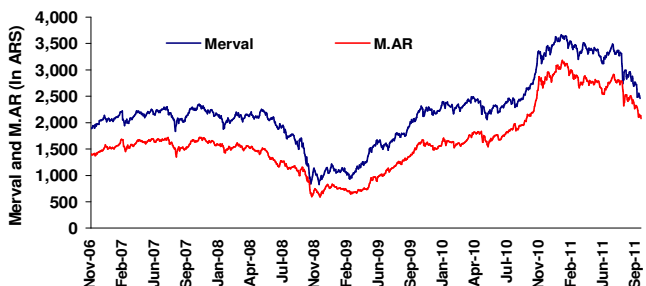
Month	Exchange Rates (ARS per unit of foreign currency, eop) ^(*)								
	USD	Variation		€	Variation		R\$	Variation	
		m/m	YTD		m/m	YTD		m/m	YTD
Sep-11	4.208	0.1%	5.7%	5.633	-6.8%	6.4%	2.239	-15.3%	-6.6%



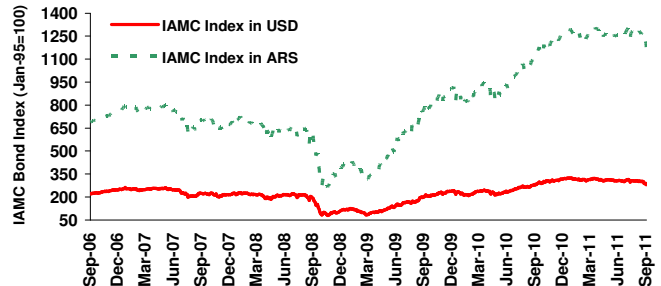
(*) Cross exchange rates. Source: Argentine banks ask price for ARS/USD, ThomsonReuters, ask price for € / USD and for R\$ / USD.

EQUITY AND FIXED INCOME

Month	Merval Index				Merval Argentina Index (M.AR)			
	Value	m/m (in ARS)	m/m (in USD)	YTD (in USD)	Value	m/m (in ARS)	m/m (in USD)	YTD (in USD)
Sep-11	2,456	-17.17%	-17.27%	-34.07%	2077.1	-17.16%	-17.25%	-33.73%



Month (eop)	IAMC Bond Index (in USD)	Subindexes (in USD)								
		Short in ARS		Long in ARS		Short in USD		Long in USD		
	m/m	YTD	m/m	YTD	m/m	YTD	m/m	YTD		
Sep-11	-8.79%	-11.7%	-1.9%	2.1%	-18.4%	-32.0%	3.4%	9.2%	-5.4%	0.4%



(*) Data as from September 23rd, 2011. In the case of y/y and m/m variations, they are calculated against the last day of each corresponding period

Stock Market Indicators - September 30, 2011

Code	Sector	Closing Price (ARS)		Price Change (measured in ARS)			P/E	52-week price range ⁽¹⁾ (measured in ARS)			
		30-Sep-11		m/m	y/y	ytd		Low	(%) ⁽²⁾	High	(%) ⁽³⁾
Merval		2,455.79		-17.17%	-7.10%	-30.30%	8.14	2,438.97	0.69%	3,700.90	-33.64%
M.AR		2,077.06		-17.15%	-2.75%	-29.94%	8.10	2,058.96	0.88%	3,210.07	-35.30%
Merval 25		2,518.52		-17.16%	-5.89%	-29.87%	8.15	2,502.50	0.64%	3,778.51	-33.35%

Aluar	ALUA	Metallurgic & Siderurgic	3.48	-17.5%	-14.4%	-35.2%	8.88	3.42	1.8%	6.14	-43.3%
Banco Hipotecario	BHIP	Banks	1.57	-21.1%	-16.5%	-51.1%	10.78	1.53	2.6%	3.61	-56.5%
Banco Macro	BMA	Banks	9.6	-19.7%	-43.7%	-48.0%	5.40	9.40	2.1%	21.30	-54.9%
Banco Patagonia	BPAT	Banks	5.07	-0.6%	10.6%	-3.0%	6.44	4.49	12.9%	6.13	-17.3%
BBVA Banco Francés	FRAN	Banks	9	-23.1%	-24.15%	-35.3%	3.94	8.70	3.4%	16.39	-45.1%
Celulosa	CELU	Paper and Cellulose	5	-22.5%	19.0%	-45.2%	7.65	4.12	21.4%	10.45	-52.2%
Central Puerto	CEPU2	Electricity Generation	17.35	-10.6%	113.5%	-9.8%	5.74	7.90	119.6%	21.50	-19.3%
EDENOR	EDN	Electricity Distribution	1.42	-16.5%	-9.0%	-46.4%	-7.70	1.42	0.0%	2.95	-51.9%
Grupo Financiero Galicia	GGAL	Banks	3.93	-26.1%	-0.42%	-34.9%	6.20	3.87	1.6%	6.78	-42.0%
IRSA	IRSA	Real Estate	4.05	-19.8%	-25.6%	-33.9%	8.31	4.00	1.3%	6.88	-41.1%
Ledesma	LEDE	Agribusiness	5.716	-25.3%	14.4%	-28.7%	11.97	4.95	15.5%	10.69	-46.5%
Mirgor	MIRG	Automobile Industry	83	-19.4%	23.9%	-19.4%	5.75	65.50	26.7%	146.60	-43.4%
Molinos Río de la Plata	MOLI	Food and Beverages	25.5	-17.7%	41.6%	-8.6%	17.33	17.44	46.3%	42.00	-39.3%
Pampa Energía	PAMP	Holdings	2.17	-1.4%	21.2%	-21.4%	-62.75	1.75	23.9%	3.14	-30.9%
Petrobras Argentina	PESA	Oil & Gas Industry	6.49	-14.0%	1.4%	-37.9%	6.88	6.19	4.9%	11.34	-42.8%
Petroleo Brasileiro - Petrobras	APBR	Oil & Gas Industry	51.4	-18.2%	-27.8%	-32.6%	6.25	51.10	0.6%	82.75	-37.9%
Siderar	ERAR	Metallurgic & Siderurgic	21.2	-25.1%	-9.2%	-30.0%	3.99	21.10	0.5%	31.60	-39.9%
Soc. Comercial del Plata	COME	Holdings	0.617	-22.4%	48.0%	4.6%	-0.37	0.41	50.5%	0.92	-32.9%
Solvay Indupa	INDU	Manufacturing Industry	2.02	-17.6%	-26.5%	-38.2%	-71.83	1.98	2.0%	4.10	-50.7%
Telecom Argentina	TECO2	Telecommunications	17.7	-14.3%	11.0%	-7.4%	8.02	15.76	12.3%	22.70	-22.0%
Tenaris	TS	Metallurgic & Siderurgic	60.95	-17.1%	-18.9%	-37.4%	14.12	59.50	2.4%	107.94	-43.5%
Transener	TRAN	Electricity Transportation	1.11	-13.3%	9.9%	-31.5%	19.08	1.00	11.6%	1.79	-38.0%
Transp. de Gas del Norte	TGNO4	Gas Transportation	0.8	-19.2%	4.6%	-47.0%	3.88	0.73	9.6%	1.70	-52.9%
Transp. de Gas del Sur	TGSU2	Gas Transportation	2.85	-10.9%	39.3%	-16.0%	13.44	2.00	42.4%	3.79	-24.8%
YPF	YPFD	Oil & Gas Industry	166	-4.9%	16.6%	-14.0%	11.98	139.53	19.0%	215.18	-22.9%

Market Capitalization	Sep-11	Aug-11	Jul-11	Jun-11	May-11	Apr-11	Mar-11	Feb-11	Jan-11
Total(Bn. USD) ⁽¹⁾	379	416	455	495	513	535	520	526	503
Domestic Companies (Bn USD)	47	53	58	60	60	61	60	66	66

Notes:

- (1) Market Capitalization includes: Repsol YPF, Telefónica, Tenaris, Banco Santander, and Petroleo Brasileiro S.A. - Petrobras.
- (2) Percentage difference between the closing price of 9/30/11 and the lowest value of the last 52 weeks
- (3) Percentage difference between the highest closing price of the last 52 weeks and the price of 9/30/11.
- (4) Considering intraday and closing prices



Bond Market Indicators - September 30, 2011

Fixed Income Securities	Code	Currency	Inflation Adjusted?	Coupon (Annual)	Closing Price (ARS, BASE)*	Last Trading Date	30-day Price Chg.	Current Yield	YTM	Parity	Modified Duration	Maturity	Governing Law
BONAR V in ARS	AJ12	ARS	No	10.50%	100.00	30-Sep-11	0.76%	10.86%	16.25%	96.81%	0.60	12-Jun-12	Argentina
BONAR 2013	AA13	ARS	No	16.36%	96.78 Ex	3-Aug-11	0.00%	16.91%	20.81%	96.74%	1.23	4-Apr-13	Argentina
BONAR 2014	AE14	ARS	No	15.41%	99.50	30-Sep-11	-0.30%	15.93%	19.12%	96.84%	1.76	30-Jan-14	Argentina
BOCON PREV. 5th. Series	PRE0	ARS	No	12.86%	89.662 Ex	28-Sep-11	3.35%	14.35%	20.11%	89.63%	2.01	15-Mar-14	Argentina
BOCON PREV. 4th. Series	PRE9	ARS	Yes(CER)	2.00%	185.00	30-Sep-11	-3.20%	2.26%	12.24%	88.63%	1.21	15-Mar-14	Argentina
BODEN 2014	RS14	ARS	Yes(CER)	2.00%	156.00	30-Sep-11	-3.58%	2.39%	13.42%	83.76%	1.51	30-Sep-14	Argentina
BONAR 2015	AS15	ARS	No	16.22%	118.75	30-Sep-11	-1.84%	13.78%	20.24%	95.26%	1.94	10-Sep-15	Argentina
BOCON PROV. 4th. Series	PRO7	ARS	No	24.27%	76.50	29-Sep-11	-1.00%	0.37%	24.46%	65.49%	1.77	1-Jan-16	Argentina
BOCON PROV. 4th. Series 2%	PR12	ARS	Yes(CER)	2.00%	246.00	30-Sep-11	-5.18%	2.48%	13.77%	80.50%	1.86	3-Jan-16	Argentina
BOCON PROV. 7th. Series	PR14	ARS	No	12.86%	80.50	30-Sep-11	-1.46%	15.98%	22.55%	80.47%	2.82	4-Jan-16	Argentina
BOGAR 2018	NF18	ARS	Yes(CER)	2.00%	178.00	30-Sep-11	-15.63%	3.21%	18.49%	62.27%	2.88	4-Feb-18	Argentina
BOGAR 2020	NO20	ARS	Yes(CER)	2.00%	119.585 Ex	26-Apr-10	0.00%	4.80%	25.40%	41.65%	3.49	4-Oct-20	Argentina
BOCON PROV. 8th. Series	PR15	ARS	No	12.86%	63.00	30-Sep-11	-9.68%	-	23.82%	52.56%	6.27	4-Oct-22	Argentina
BOCON PROV. 6th. Series 2%	PR13	ARS	Yes(CER)	2.00%	86.00	30-Sep-11	-20.96%	-	17.94%	38.36%	5.88	15-Mar-24	Argentina
DISCOUNT BOND in ARS	DICP	ARS	Yes(CER)	4.06%	125.20	30-Sep-11	-20.88%	-	12.71%	52.49%	8.29	31-Dec-33	Argentina
DISCOUNT BOND in ARS (#)	DIP0	ARS	Yes(CER)	4.06%	147.00	16-Sep-11	1.38%	0.00%	10.78%	61.63%	8.98	31-Dec-33	Argentina
PAR BOND in ARS (#)	PAP0	ARS	Yes(CER)	1.18%	41.361 Ex	22-Sep-11	-13.27%	5.54%	11.28%	21.30%	13.48	31-Dec-38	Argentina
PAR BOND in ARS	PARP	ARS	Yes(CER)	1.18%	44.00	30-Sep-11	-17.99%	5.21%	10.81%	22.66%	13.78	31-Dec-38	Argentina
CUASIPAR BOND	CUAP	ARS	Yes(CER)	3.31%	53.00	30-Sep-11	-19.70%	-	14.13%	21.15%	10.50	31-Dec-45	Argentina
BODEN 2012	RG12	USD	No	0.45%	447.50	30-Sep-11	4.99%	0.42%	-6.60%	106.28%	0.86	3-Aug-12	Argentina
BODEN 2013	RA13	USD	No	0.44%	434.00	30-Sep-11	3.16%	0.43%	-2.14%	102.95%	1.08	30-Apr-13	Argentina
BONAR VII	AS13	USD	No	7.00%	453.00	30-Sep-11	1.02%	6.53%	3.15%	107.19%	1.79	12-Sep-13	Argentina
BODEN 2015	RO15	USD	No	7.00%	394.75	30-Sep-11	-4.54%	7.46%	9.07%	93.78%	3.33	3-Oct-15	Argentina
BONAR X	AA17	USD	No	7.00%	376.50	30-Sep-11	-6.11%	8.12%	10.59%	86.65%	4.16	17-Apr-17	Argentina
GLOBAL BOND 2017 (#)	GAJ17	USD	No	8.75%	429.00	30-Sep-11	-3.81%	8.84%	9.17%	99.00%	4.01	2-Jun-17	New York
DISCOUNT BOND in USD (#)	DIY0	USD	No	5.77%	460.00	30-Aug-11	0.00%	0.00%	10.88%	81.75%	8.38	31-Dec-33	New York
DISCOUNT BOND in USD (#)	DIA0	USD	No	5.77%	419.00	30-Sep-11	-4.12%	0.00%	12.06%	74.46%	7.98	31-Dec-33	Argentina
DISCOUNT BOND in USD	DICY	USD	No	5.77%	440.00	30-Sep-11	-6.78%	-	11.43%	78.20%	8.19	31-Dec-33	New York
DISCOUNT BOND in USD	DICA	USD	No	5.77%	425.00	30-Sep-11	-5.56%	-	11.88%	75.53%	8.04	31-Dec-33	Argentina
PAR BOND in USD (#)	PAY0	USD	No	2.50%	157.00	30-Sep-11	-2.07%	6.71%	10.66%	37.30%	11.79	31-Dec-38	New York
PAR BOND in USD (#)	PAA0	USD	No	2.50%	150.00	30-Sep-11	-5.29%	7.02%	11.07%	35.64%	11.55	31-Dec-38	Argentina
PAR BOND in USD	PARY	USD	No	2.50%	164.00	30-Sep-11	-6.93%	6.42%	10.28%	38.96%	12.02	31-Dec-38	New York
PAR BOND in USD	PARA	USD	No	2.50%	154.00	30-Sep-11	-4.63%	6.84%	10.83%	36.59%	11.69	31-Dec-38	Argentina
GDP Warrants													
GDP Warrant in ARS	TVPP	ARS	No	-	14.20	30-Sep-11	-15.68%	-	-	-	-	15-Dec-35	Argentina
GDP Warrant in USD Argentine Law	TVPA	USD	No	-	65.60	30-Sep-11	-14.58%	-	-	-	-	15-Dec-35	Argentina
GDP Warrant in USD NY Law (#)	TVY0	USD	No	-	64.30	30-Sep-11	-15.06%	-	-	-	-	15-Dec-35	New York
GDP Warrant in USD NY Law	TVPY	USD	No	-	66.00	30-Sep-11	-14.51%	-	-	-	-	15-Dec-35	New York
GDP Warrant in € English Law	TVPE	EUR	No	-	81.00	30-Sep-11	-11.48%	-	-	-	-	15-Dec-35	English
Traded Value (ARS Billion)				Sep-11	Aug-11	Jul-11	Jun-11	May-11	Apr-11	Mar-11	Feb-11	Jan-11	Dec-10
TOTAL				18.84	20.31	16.24	17.83	18.17	16.93	16.68	13.63	14.40	16.53
Public Bonds				3.38	3.93	2.92	3.11	3.27	3.02	3.16	2.31	2.33	2.58
Concurrence Market				3.38	3.93	2.92	3.11	3.27	3.02	3.16	2.31	2.33	2.58
Continuous Trading				8.68	9.35	6.59	8.07	8.31	7.98	7.60	5.50	5.85	6.56
Stocks				0.93	1.25	1.24	1.17	0.82	1.02	1.03	1.33	1.43	1.86
Concurrence Market				0.93	1.25	1.24	1.17	0.82	1.02	1.03	1.33	1.43	1.86

Notes:

* Closing price per 100 residual value, including accrued interest (Dirty Price) at the Buenos Aires Stock Exchange (BASE)

Bonds and GDP Warrants issued after the 2010 debt swap, aimed at restructuring the debt that had not been exchanged in the 2005 debt swap.

Ex = Ex coupon.